



GAT MONTHLY MEMBERSHIP PROGRESS REPORT

Results as of: 10/31/2024

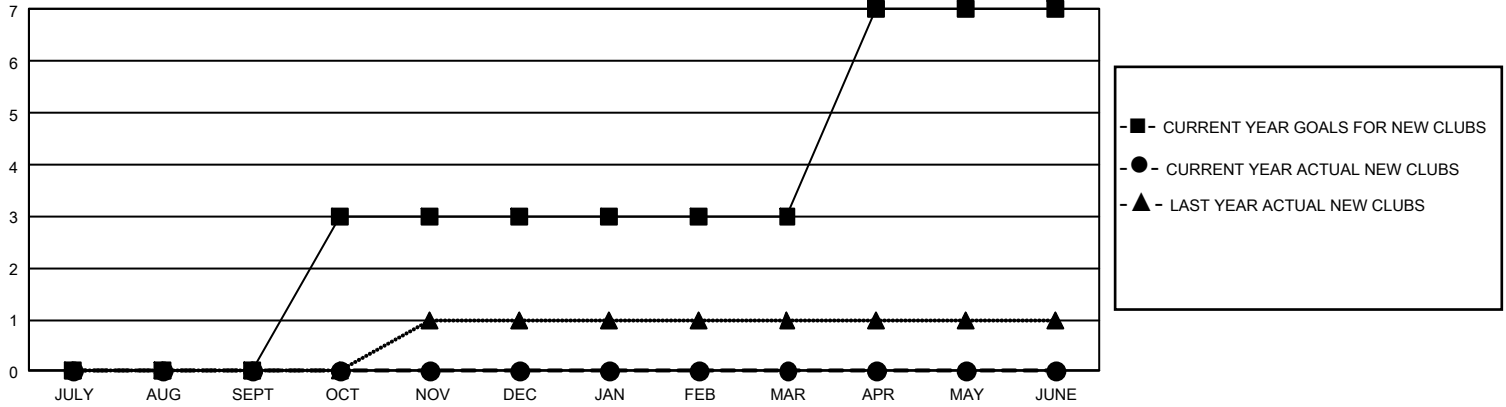
GMT Constitutional Area 7, Group B

REPORT DOES NOT INCLUDE CLUBS IN UNDISTRICTED AREAS.

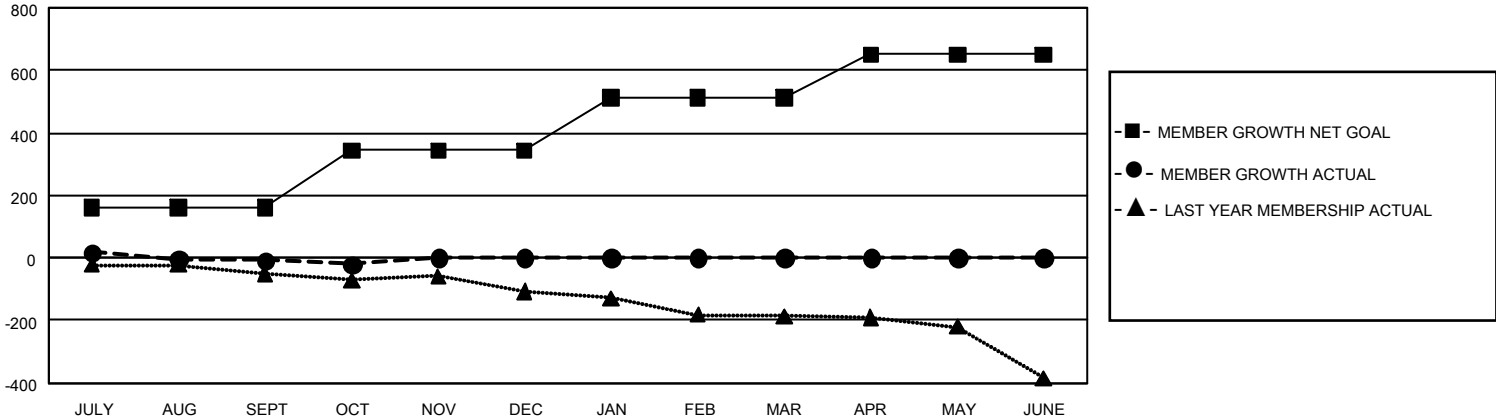
| Clubs | | | |
|-----------------------|---------------|-----------|---------------|
| RESULTS FOR 2024-2025 | | | |
| QUARTER | NEW CLUB GOAL | NEW CLUBS | DROPPED CLUBS |
| JULY/AUG/SEPT | 0 | 0 | 7 |
| OCT/NOV/DEC | 9 | 0 | 0 |
| JAN/FEB/MAR | 0 | 0 | 0 |
| APR/MAY/JUNE | 12 | 0 | 0 |

| Members | | | |
|-----------------------|------------------------|----------------------|--|
| RESULTS FOR 2024-2025 | | | |
| QUARTER | MEMBER GROWTH NET GOAL | MEMBER GROWTH ACTUAL | DROPPED MEMBERS ACTUAL (including transfers) |
| JULY/AUG/SEPT | 162 | 249 | 192 |
| OCT/NOV/DEC | 182 | 63 | 62 |
| JAN/FEB/MAR | 168 | 0 | 0 |
| APR/MAY/JUNE | 139 | 0 | 0 |

GOALS AND ACTUAL NEW CLUBS CUMULATIVE



GOALS AND ACTUAL MEMBERS CUMULATIVE



| | | | |
|--|--|--|--|
| DROPPED CLUBS: 7 | 107 CLUBS OF 294 ADDED 1 OR MORE NEW MEMBERS | GENDER DISTRIBUTION | |
| | | MALE 5,055 (66.42%) FEMALE 2,554 (33.56%) NON BINARY 2 (0.03%) PREFER NOT TO ANSWER 0 (0.00%) | TOTAL FAMILY UNIT MEMBERS 0 FAMILY MEMBERS PAYING HALF DUES 0 |
| DROPPED MEMBERS | | CLICK HERE FOR CUMULATIVE MEMBERSHIP DATA | |
| DECEASED 41 CLUB CANCELLED 0 OTHER 206 TOTAL 247 | | | |